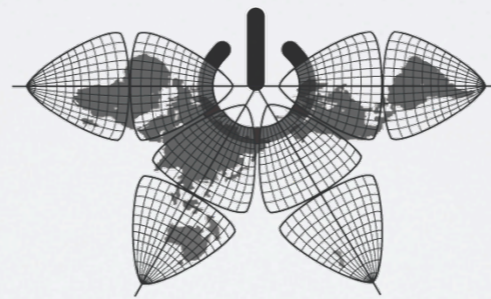


TECHSCAPE



a project of the engine room

Techscape project

The TechScape project collects **actionable data** that details civil society's **experience of technology** in their operations and identifies their **programmatically ambitious** for technology and what **resource gaps** need to be filled for those ambitions to be realized.

Sample composition

The TechScape project aims to collect assessment data from a broad global sample, including **5-10 organizations** from **300-400 cities** urban areas across the globe.

Research questions

TechScape assessments will provide concrete evidence to answer the following *questions*:

1. How do organizations **use** technology?

what works - are tools integrated - what does it cost

2. How do organizations **adopt** technology?

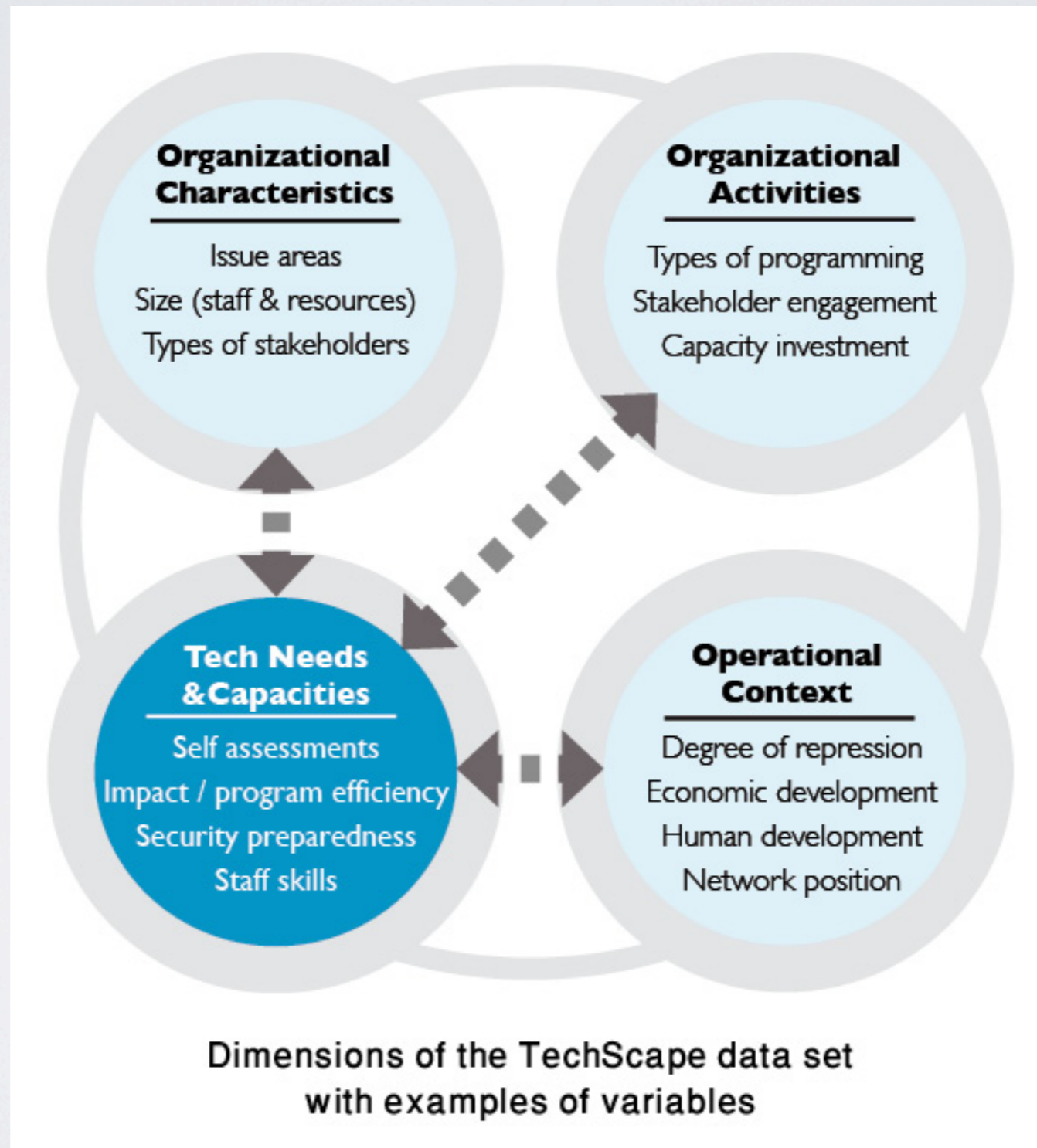
what motivates and inhibits - who is leading - what does it cost

3. How do organizations **anticipate** technology?

hype - intimidation - what do they think it will cost

Dimensions and variables

Dimensions and variables are designed to make the assessments comparable across contexts.



Methodology

Paid field researchers

The engine room will identify, contract, and train local researchers to collect data.

These researchers will meet several criteria including (but not limited to): expertise in local civil society, technology use by civil society, and fluency in survey subject's language.

The engine room believes that a key factor in engaging with high-quality local researchers is to pay at internationally acceptable rates for their work.

Methodology

Data entry platform

To manage the influx of data from multiple researchers working in multiple contexts, the engine room will employ a data entry platform to:

Maximize efficiency,

Lower cost,

Facilitate iterative analysis, and

Maintain high quality control standards.

Methodology

Data sources

Field researchers' desk research (Contextual data)

Local experts (Contextual data on operational environment)

Local civil society organizations (info about organizations themselves)

TechScape Modules

TechScape modules are designed with specific networks in mind. These modules are designed in collaboration with a network and provide grantors and capacity building organizations to better understand how to strategically support technology adoption by local partners.

Pact Module

Sample Selection

1. Determine a rough sample size
2. Select geographic focus and focal points
3. Select organizations according to specific variables

Pact Module

Sample Selection Support

To secure a durable and representative sample, the selected organizations should be mapped for, and represent, a balanced sample across the following **variables***:

- **Geography** (City, Region, Language)
- **Issue Area of Organization**
- **Size of Organization** (Number of staff)
- **Contextual Constraints by Country** (Freedom of Expression and Association, Infrastructure, Security and Conflict)

* Technical proficiency should NOT influence whether or not an organization is included in the sample.

Pact Module

Implementation

Once the sample selection process is complete, the engine room will manage the processes of:

- Identifying, contracting, and training local researchers
- Developing the cloud-based data collection infrastructure appropriate for the sample size
- Supporting the local researchers as necessary through the data collection and transmission processes
- Analyzing the assessment data based on Pact's areas of interest
- Drafting briefs to frame the data in an actionable way for Pact